

# THERMOSTAHL MPB

automatic pellet burner



HERMOSTAHL MPB is a pellet burner for wood pellet with diameter 6-8 mm. Thanks to the construction with a forward turning flame, this burner will give the most effective combustion and it is easy to fit it to the most boilers on the market.

The heat output of the burner can be set fixed, or can be set automatically according to the heat demand.

The burner furnace is produced of fireproof stainless steel which is resistant to temperature up to 1150°C.

The burner comes with its own controller, which can support multiple functions and standard feeding screw of 1,5m length.

The burner comes in two versions: manual cleaning and automatic cleaning by means of compressed air.

## Fuels



pellet



Automatic power setup



Automatic ignition and flame supervision



Automatic cleaning by compressed air



AISI 310 Heat refractory steel



Safety features and automatic error diagnosis

## Main Features

- Built-in controller with multiple functions and LCD screen
- Automatic cleaning by means of compressed air (additional compressor requested)
- Automatic power setup according to the heat demand
- Automatic pellet feed according to power level
- Ceramic ignition element for long-life operation and fast ignition
- Control of central heating pump and hot water / buffer pump
- Temperature sensors for the boiler and hot water temperature

### Safety devices:

- Elbow-shape feeder to prevent backfire entry from burner into pellet hopper
- Melting feeding hose
- Safety contact thermostat
- Fuse protection
- In case of power interruption, all parameter settings are stored in the memory of the controller

## BURNER CONTROLLER



Automatic power level



Central heating pump



Hot water/buffer pump



Room thermostat



Alarm signals



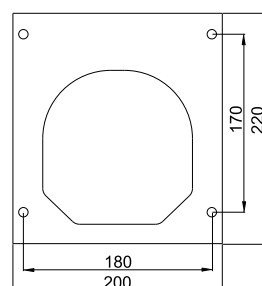
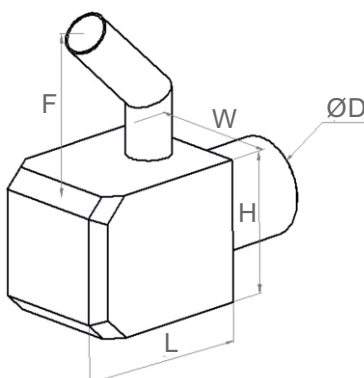
Multilingual menu

Burner controller ensures the smooth and safe operation of the heating system. Compared with the most burners on the market, the controller is far more extensive in terms of function, possibilities and easy of use.

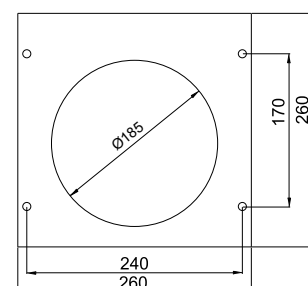
- LCD screen (2x20signs)
- 5 menus (A. Furnace settings, B. HUW settings, C. Burner settings, D. Device settings, E. Manufacturer settings)
- Five languages : English, Greek, Polish, German, Romanian
- Boilers/furnace temperature sensor
- HUW/buffer temperature sensor (optional)
- Electric cable for connecting CH pump
- Electric cable for connecting HUW/buffer pump (optional)
- Room thermostat connection
- Vocal alarm outputs in case of an error
- Diagnosis of errors
- 4A fuse for high voltage protection
- Built-in flash memory maintains programme settings and safety functions in case of power failure
- Automatic restart of the burner in case of a power failure

## TECHNICAL CHARACTERISTICS

| Type                        |                               | NANI 35  | MPB 60      | MPB 80      | MPB 150 Pro | MPB 250 Pro  | MPB 450 Pro  |      |
|-----------------------------|-------------------------------|--|-------------|-------------|-------------|--------------|--------------|------|
| Nominal heat output         | kW                            | 10-40  | 20-60       | 40-80       | 70-150      | 100-250      | 200-450      |      |
| Max fuel consumption        | kg/h                          | 2-8  | 5-10        | 8-16        | 14-30       | 20-50        | 40-80        |      |
| Min fire chamber dim. LxWxH | mm                            | 350x300x350  | 450x350x400 | 650x400x500 | 900x600x600 | 1200x700x700 | 1500x800x800 |      |
| Electrical connection       | V/Hz                          | 230/50   | 230/50      | 230/50      | 230/50      | 230/50       | 230/50       |      |
| Power consumption           | W                             | 30-40  | 40-50       | 40-70       | 60-70       | 70-80        | 180-200      |      |
| Fuel                        |                               | Wood pellet (diameter 6-8mm, ash <1%, humidity <10%) |             |             |             |              |              |      |
| Weight                      | kg                            | 14   | 20          | 23          | 45          | 53           | 120          |      |
| Standard feeder length      | m                             | 1,5  | 1,5         | 1,5         | 2           | 2            | 2            |      |
| Dimensions                  | Length L                      | mm   | 610         | 565         | 595         | 815          | 835          | 1100 |
|                             | Width W                       | mm   | 220         | 270         | 270         | 360          | 425          | 565  |
|                             | Height with feeding pipe F    | mm   | 420         | 550         | 550         | 540          | 540          | 610  |
|                             | Height without feeding pipe H | mm   | 225         | 275         | 275         | 420          | 420          | 570  |
|                             | Fire tube diameter D          | mm   | 140         | 180         | 180         | 204          | 254          | 400  |



Flange NANI 35



Flange MPB 50/80